



**NATIONAL REFRIGERANTS LTD**  
**Laboratory**  
4 Watling Close, Sketchley Meadows Business Park,  
Hinckley, Leicestershire, LE10 3EZ  
Tel: 01455 630 790 Ex.214 Fax: 01455 630 791  
Email: AWard@nationalref.com  
www.nationalref.com

04 August 2020

**CERTIFICATE OF ANALYSIS**

**Refrigerant R410A**

Cylinders: 510682S1, 1N040321

Batch No: 2021701

Lab. Ref: 20-32-2-12

<b>Test</b>	<b>Result</b>
Moisture (ppm m/m, $\leq 10$ ppm):	5
Non-condensable gases (% v/v, $\leq 1.50\%$ at 25°C):	0.18

Purity (% m/m):

R32 (48.5-50.5%) Difluoromethane	49.21%
R125 (49.5-51.5%) Pentafluoroethane	50.74%

Total Purity 99.95%

High Boiling Residue (% m/m): <0.01

Particulates (Pass/Fail): PASS

Approved to quality standard AHRI 700-2019

Adam Ward  
Laboratory Technician



# NATIONAL REFRIGERANTS LTD

## Laboratory

4 Watling Close, Sketchley Meadows Business Park,  
Hinckley, Leicestershire, LE10 3EZ

Tel: 01455 630 790 Ex.214 Fax: 01455 630 791

Email: [AWard@nationalref.com](mailto:AWard@nationalref.com)

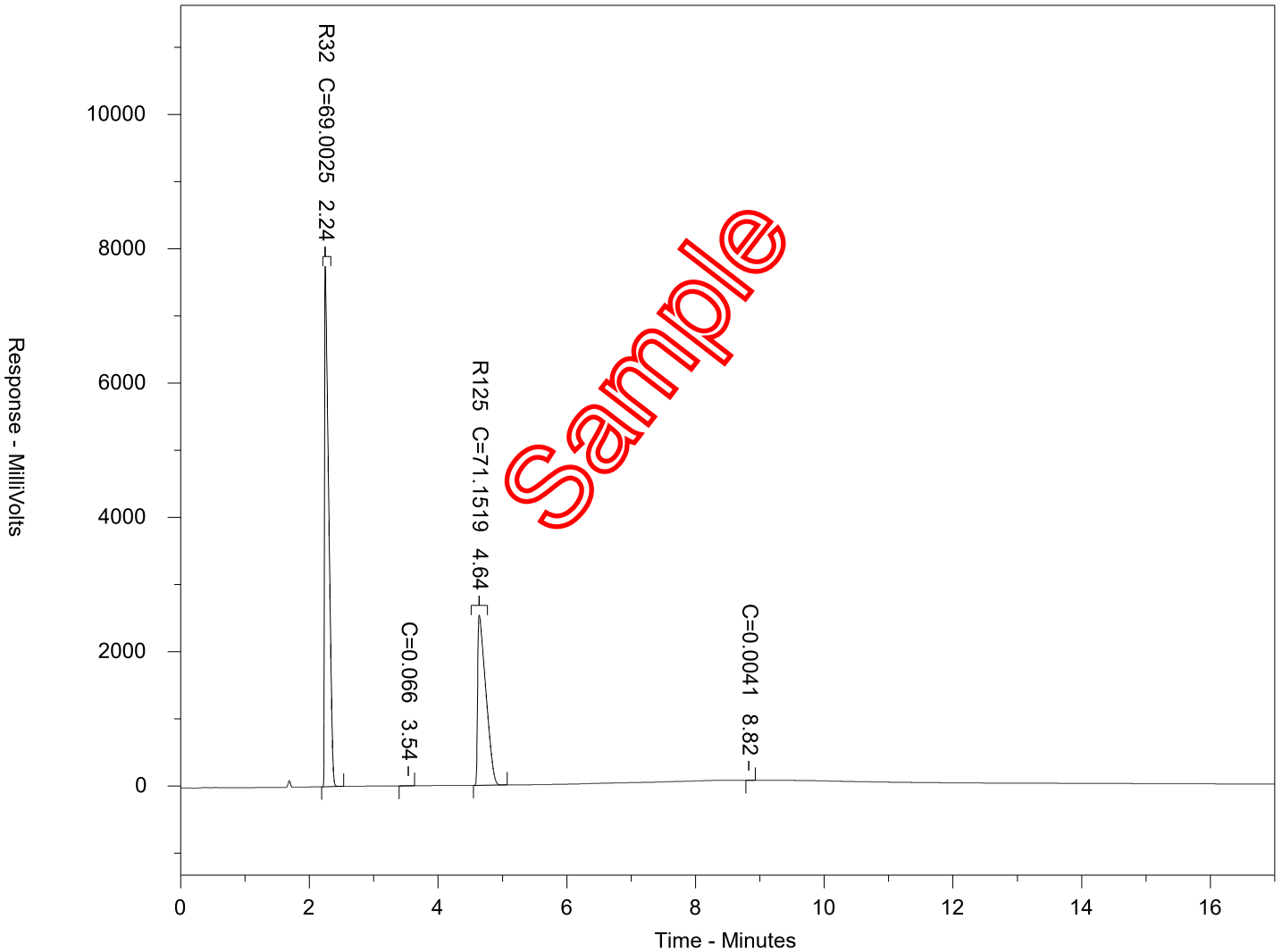
[www.nationalref.com](http://www.nationalref.com)

Last Calibrated: 08/04/2020  
Laboratory Sample ID: 20-32-2-12

Purity Analysis Finished: 04/08/2020 11:20:21

Component	%
R32	49.2086
R125	50.7414

— C:\GCData\GC 17890\_20217.5685.BND 20-32-2-12





# NATIONAL REFRIGERANTS LTD

## Laboratory

4 Watling Close, Sketchley Meadows Business Park,  
Hinckley, Leicestershire, LE10 3EZ

Tel: 01455 630 790 Ex.214 Fax: 01455 630 791

Email: [AWard@nationalref.com](mailto:AWard@nationalref.com)

[www.nationalref.com](http://www.nationalref.com)

Calibration Date: 12/08/2020 10:41:20

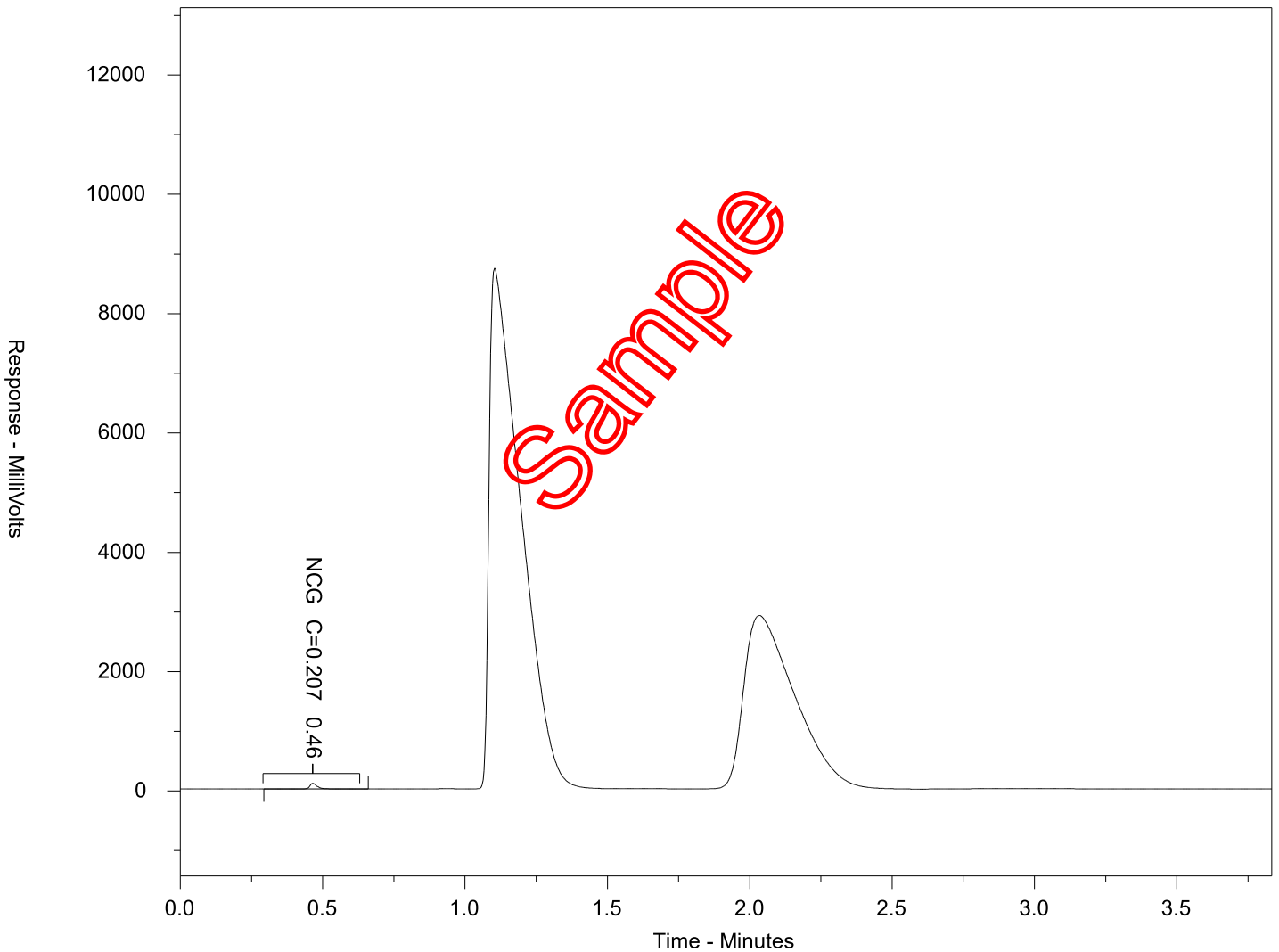
Laboratory Sample ID: 20-32-2-12 NCG

Purity Analysis Finished: 04/08/2020 11:03:59

Component	Vol %
NCG	0.21

0.18% after Temperature Calculation at 17c

— C:\GCData\GC 3\7890#3B\_20217.6791.RAW 20-32-2-12 NCG



Sample I.D number

2032.212x

Run 1 12:06:39 F

Nett Count 15.36ug

Drift 7

Result Format ppm

Calculation Mode W/w

Total Wt. 1747.9000 g

Tare Wt. 1744.1000 g

Sample Wt. 3.8000 g

Res 4.04 ppm